

STATION ROAD

PLANS

The building will provide the University with new student accommodation with a total of 112 ensuite rooms.

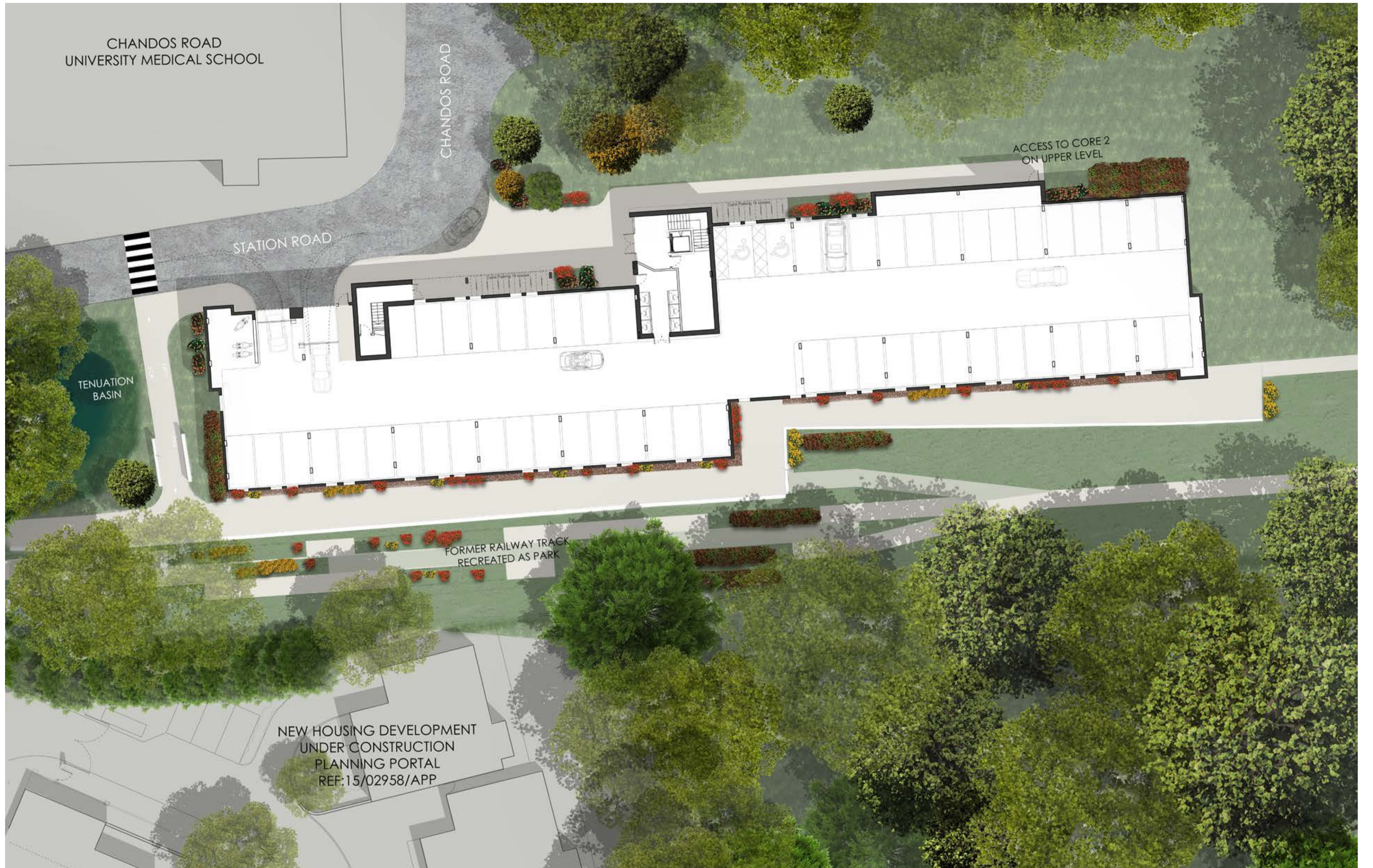
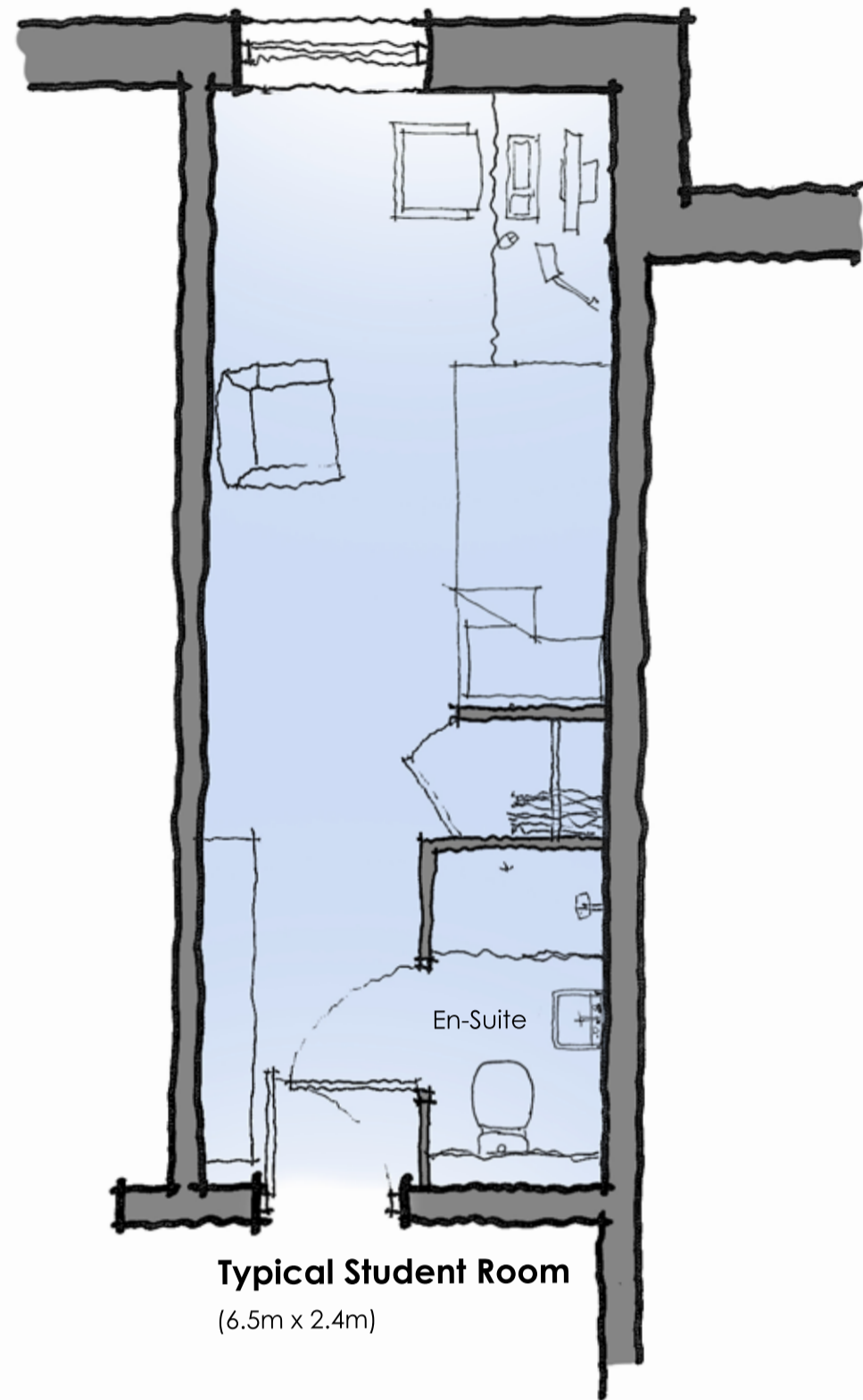
On the ground floor there will be 57 car parking spaces, with room for 3 motorcycles and 28 cycle spaces.

The parking will remain for University use however it will also continue to be available for external users of the University's facilities, e.g. The Filmplace Filmplace screenings.

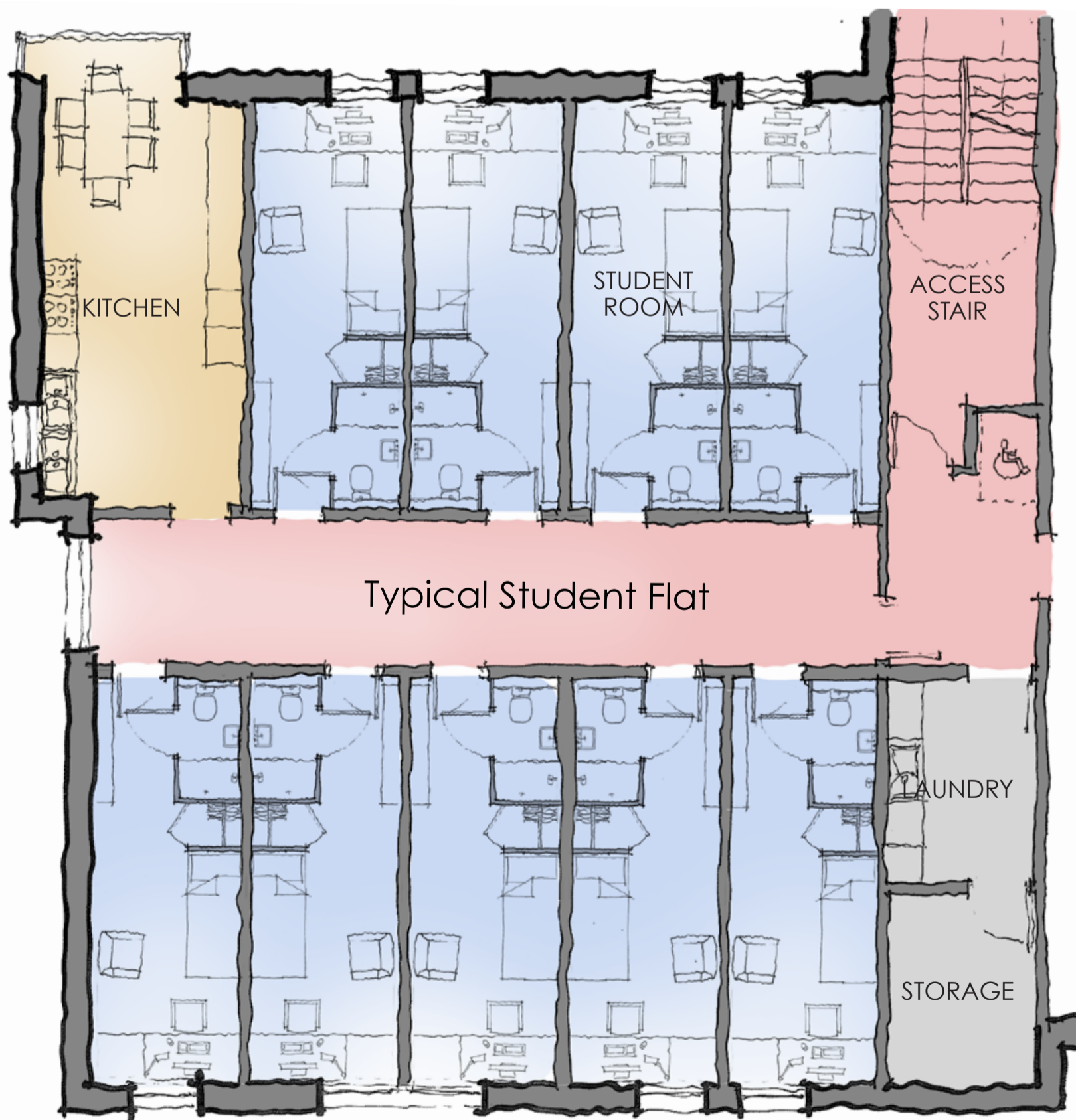
An external public path will run along the length of the redeveloped railway platform connecting the existing circular walk with the railway walk.

The first floor and second floor each contain 56 student rooms, clustered into flats of 9-10 residents. 3 accessible rooms are included on each floor.

These flats will have individual kitchens for the residents to share. Utility facilities will be located between flats off of the shared circulation cores.



Ground Floor



Plan Section showing typical flat layout



1st and 2nd Floor