

STATION ROAD SECTION AND BAY STUDY

The scheme has been designed to keep the height of the building as low as possible.

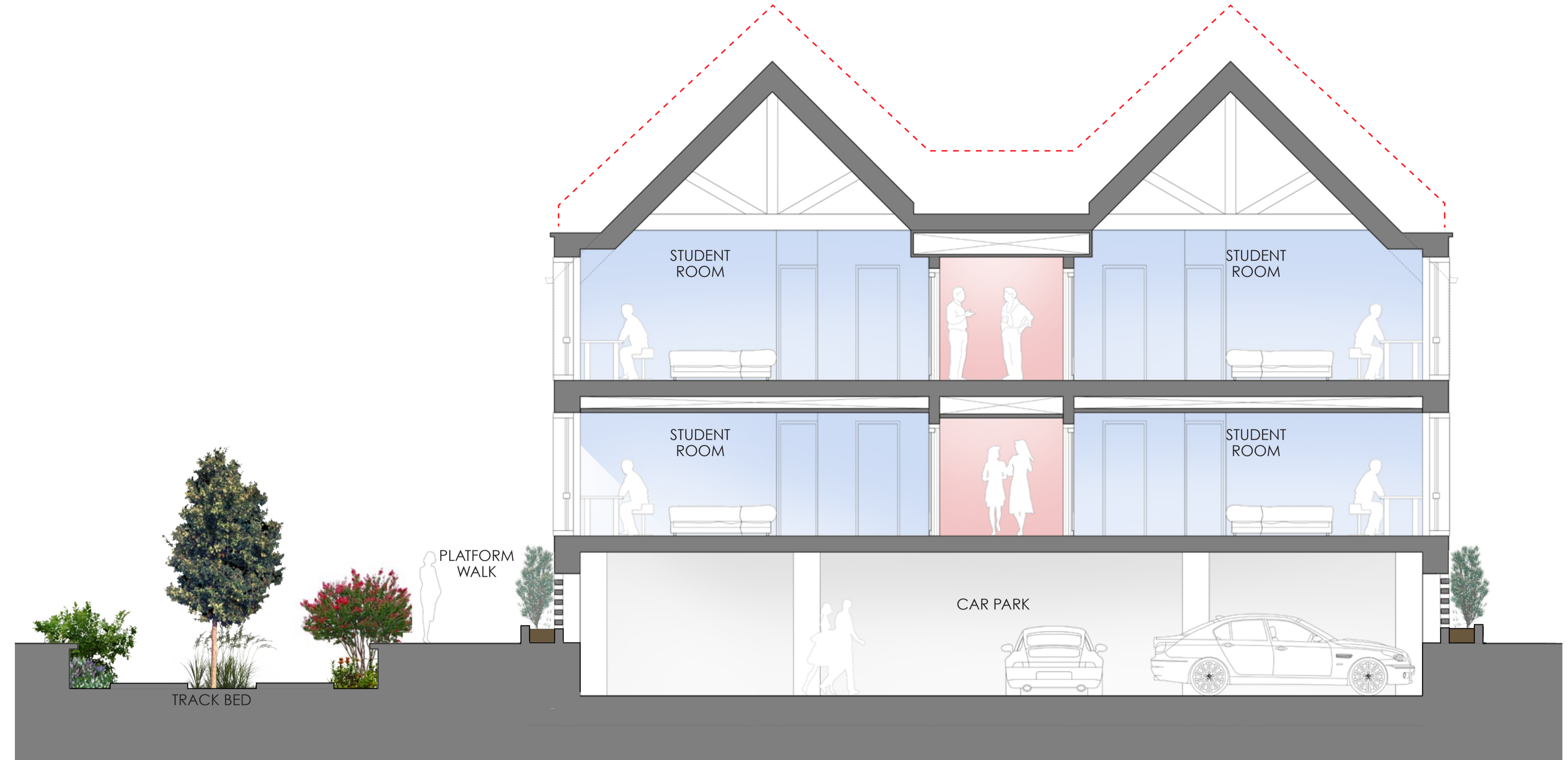
The top floor rooms are contained within the eaves of the sloping roof

As detailed earlier in response to consultation comments we have lowered the height of the building by partially excavating the ground floor carpark.

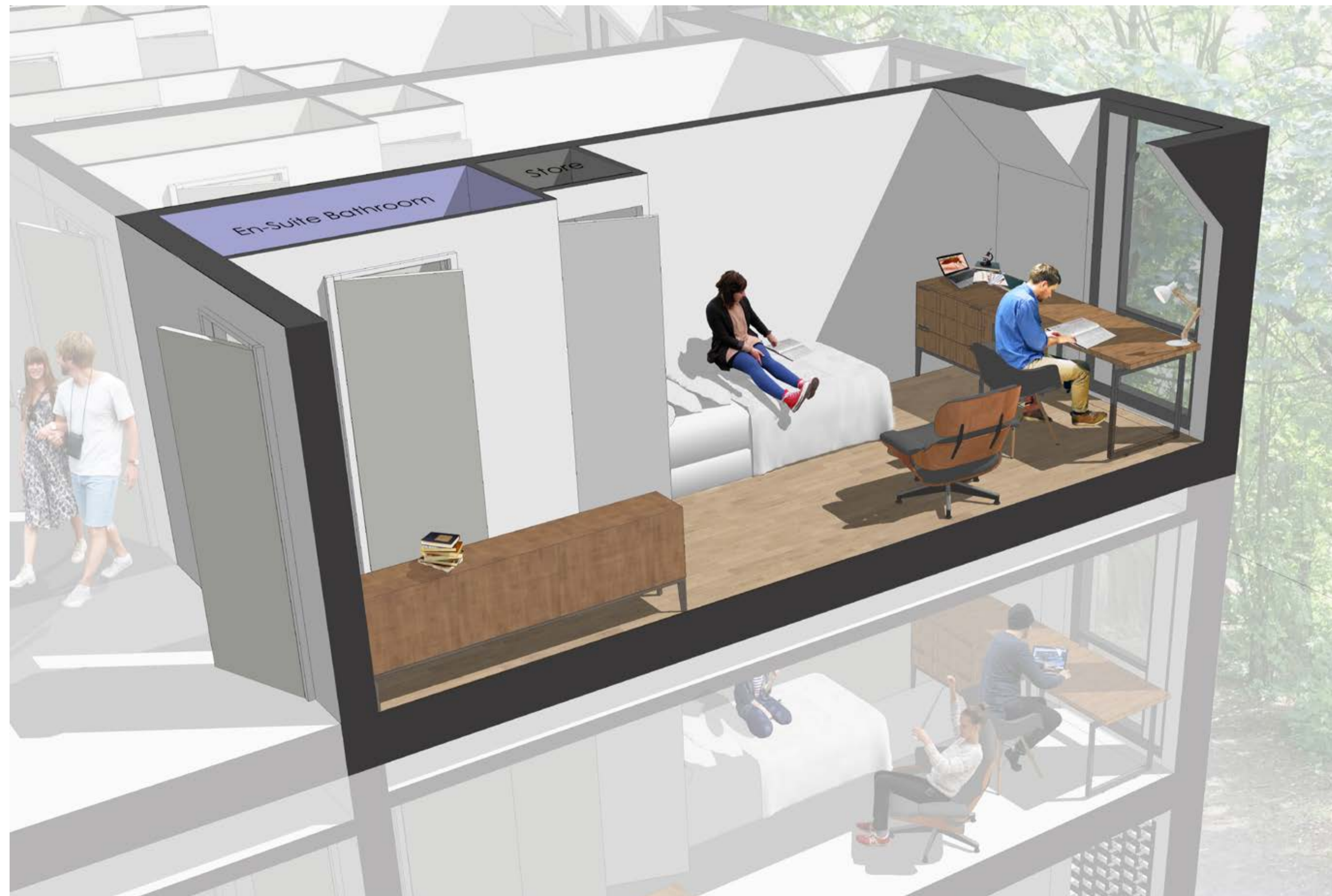
At ground floor level the cars are screened from view by a series of brick louvers.

With the view of limiting noise from the student rooms the windows will not be openable. Ventilation is achieved via a grill in the top of the window.

The current section and 3D bay study are shown below.



Typical section through student rooms of the proposed building.



3D view of typical student bedroom



3D sectional view of building from proposed refurbished railway trackbed.