

# **THE GOOD TEACHER TRAINING GUIDE 2017**

**Alan Smithers and Mandy-D Bungey**

**Centre for Education and Employment Research  
University of Buckingham**

## Contents

<i>Executive Summary</i>	i
<b>1. Introduction</b>	<b>1</b>
<b>2. Where's Best?</b>	<b>2</b>
<b>3. Qualifications and Characteristics of the Entrants</b>	<b>5</b>
<b>4. Outcomes</b>	<b>8</b>
<b>5. Which is Better: School-Led or University-Led?</b>	<b>11</b>
<i>Appendix 1: Methods</i>	<b>13</b>
<i>Appendix 2: Full League Tables</i>	<b>15</b>

## **Executive Summary**

Teachers trained in schools are more likely to become teachers than those trained in universities.

Ninety per cent of the final-year trainees from school-centred teacher training entered teaching compared with 79% from university postgraduate courses and 74% from undergraduate courses. There were no universities among the 17 providers where all final-year trainees became teachers.

It could be that those opting to train in schools are more committed and schools select trainees more carefully, seeing them as possible future colleagues.

Forty per cent of the school-based providers were assessed as 'outstanding' by Ofsted compared with 30 per cent of the university departments.

School-based training attracts a wider cross-section of society, with more from ethnic minorities, more aged 25 and over, and more men to primary teaching.

Cambridge University is the pre-eminent individual provider, topping both the primary and secondary tables. The Billericay Educational Consortium runs it close in the primary listing and the King Edward's Consortium, Birmingham, in the secondary. Eight of the top ten were school-based.

Overall 16% of the trainees entered on first-class degrees, but at Cambridge University, the King Edward's Consortium, the Pimlico-London SCITT and the George Spencer Academy SCITT there were more than double that.

Shortfalls to teacher training are a continuing concern, but the expansion of school-based training with its trainees more likely to become teachers is a reason for optimism.

## 1. Introduction

- 1.1. The Centre for Education and Employment Research (CEER) has published an annual comparison of teacher training providers since 1998 when the Teacher Training Agency (TTA), as it was then, began compiling Initial Teacher Training Performance Profiles. These set out for each provider detailed information on the intake, Ofsted inspection grades, and the destinations of the trainees. They were admirably comprehensive, but rather indigestible. The then chief executive, Anthea Millett, wanted to produce summarizing tables, but was told they were beyond her remit. Taking matters into her own hands, she offered CEER early sight of the data to produce independent league tables.
- 1.2. CEER has continued to access the data through the TTA's many re-brandings<sup>1</sup>, changes in leadership, and absorption into the Department of Education as an executive agency. But along the way there have had to be changes to the algorithm. This year, for example, we are no longer able to produce a quality scale as previously, because the DfE's Newly Qualified Teachers Survey is now conducted on a sample basis and is not amenable to analysis at the provider level. Moreover, Ofsted inspection grades are almost entirely either 'outstanding' or 'good', and obviously cannot be turned into a continuous scale. The best we can do is to make comparisons within the outstanding and good categories. To come in the upper half of the table, a training provider's latest Ofsted grade must be 'outstanding'.
- 1.3. The main focus is on all postgraduate providers. But we also provide comparisons of primary and secondary providers, and higher-education-led and school-led provision. There is, as well, a league table of undergraduate teaching providers. The top ten in each case are shown in the text, with a full listing in the appendices
- 1.4. Besides these comparisons, the ten with the highest entry qualifications, those with most successful completions, and those with the best record of entry to teaching are also shown.
- 1.5. In spite of all the changes to the teacher training system and the modifications to the metrics and algorithm, the relative stability of the pattern emerging over the years gives us confidence that our numbers have meaning and are capturing something real.

---

<sup>1</sup> Successively, Teacher Training Agency, Training and Development Agency for Schools, Teaching Agency, and the National College for Teaching and Leadership. Collectively, they will be referred to as the teaching agency in lower case.

## 2. Where's Best?

- 2.1. The best teaching training provider in 2017 on the basis of the qualifications of its entrants, Ofsted grade and training outcomes is Cambridge University. Table 2.1 shows it leads a table dominated by school-centred training. Of the top ten, eight are SCITTs. The only other university is Loughborough in sixth place.

**Table 2.1: The Top Ten<sup>1</sup>**

Provider	Trainees		Ofsted Grade	Entry Score	QTS Score	Overall Score
	First Year	Final Year				
1. University of Cambridge	344	352	1	775.7	607.4	691.5
2. The King Edward's Consortium, Birmingham	28	28	1	745.2	627.6	686.4
3. The Pimlico-London SCITT	9	9	1	722.3	627.6	675.0
4. Cramlington Teaching School Alliance SCITT	5	5	1	708.4	627.6	668.0
5. Devon Primary SCITT	38	38	1	666.1	627.6	646.9
6. Loughborough University	46	53	1	616.0	627.6	621.8
7. Leicester and Leicestershire SCITT	56	56	1	628.8	594.5	611.6
8. North East Partnership SCITT (Phys Ed)	30	30	1	646.5	566.8	606.7
9. Billericay Educational Consortium SCITT	48	51	1	605.7	590.8	598.2
10. Alban Federation	29	30	1	568.7	627.6	598.2

1. Taken from the full-listing in Table A.1.

- 2.2. In Table 2.2 we compare the primary providers and the secondary providers separately since performance in one can mask that in the other. The Billericay Educational Consortium is a case in point. It is a close second to Cambridge University in the primary table, but comes below the Devon Primary SCITT in the main table because it also has a somewhat less successful secondary programme.

**Table 2.2: Best<sup>1</sup> for Primary and Secondary<sup>2</sup>**

Primary	Score	Secondary	Score
University of Cambridge	694.5	University of Cambridge	679.3
Billericay Educational Consortium SCITT	671.7	The King Edwards Consortium,	678.1
Devon Primary SCITT	651.5	The Pimlico-London SCITT	666.3
University of Manchester	629.9	Cramlington Teaching School Alliance	659.2
Leicester and Leicestershire SCITT	618.1	Redcar and Cleveland TTP	644.5
University of Birmingham	606.6	Harris ITT	621.4
University of Exeter	604.0	Loughborough University	611.7
Bromley Schools Collegiate	603.7	University of Northumbria	606.9
University of Sussex	595.5	North East Partnership SCITT	599.7
Keele & North Staffordshire Primary SCITT	574.6	Gloucestershire ITE Partnership	590.0

1. Full listings in Appendix in Tables A2 and A3.

2. Primary providers and secondary providers standardised as one group so the scores are directly comparable. The scores may differ somewhat from those in Table 2.1 because scores for a provider's primary and secondary programmes can differ widely but are averaged in the main listing.

- 2.3. Table 2.2 confirms Cambridge University as the current pre-eminent teacher trainer with it topping both the primary and secondary listings. The Billericay Educational consortium is a close second for primary and the King Edward’s Consortium, Birmingham, a close second for secondary. These three have been the stand-out performers in previous GTTGs. Of the top ten primary providers, six were SCITTs and of the secondary, seven were SCITTs.
- 2.4. When the higher-education-led and school-led training are compared separately as in Table 2.3 Cambridge naturally emerges as the top university followed by Loughborough and Exeter some way behind. The King Edward’s Consortium is the top SCITT followed by two small providers the Pimlico-London SCITT and the Cramlington Teaching School Alliance.

**Table 2.3: Best HE-Led and School-Led Postgraduate Teacher Training<sup>1</sup>**

Higher-Education-Led ITT	Score	School-Led ITT	Score
University of Cambridge	691.5	The King Edward’s Consortium, Birmingham	686.4
Loughborough University	621.8	The Pimlico-London SCITT	675.0
University of Exeter	595.8	Cramlington Teaching School Alliance SCITT	668.0
University of Oxford	584.3	Devon Primary SCITT	646.9
University of Bristol	584.3	Leicester and Leicestershire SCITT	611.6
University of Birmingham	573.6	North East Partnership SCITT (Phys Ed)	606.7
University of Manchester	552.2	Billericay Educational Consortium SCITT	598.2
Royal Academy of Dance	542.6	Alban Federation	598.2
University of Durham	532.0	Gloucestershire ITE Partnership	597.8
University of Nottingham <sup>2</sup>	525.8	Redcar & Cleveland TTP	581.7

1. Taken from Table A.1 in Appendix.

2. University of Nottingham has absorbed Outstanding Primary Schools SCITT.

- 2.5. Government policy is to re-balance teacher training in favour of postgraduate routes, and this is where its statistics focus. Nevertheless, undergraduate courses recruit about a fifth of the trainees overall and 29% of those for primary schools. The DfE kindly carried out a provider-level analysis of its undergraduate data for us, supplying information on average UCAS points on entry, percentages awarded QTS, and destinations, but this was not broken down by phase.
- 2.6. Undergraduate teacher training is confined to the universities. Table 2.4 shows the top ten performers. At the head of the list comes the University of Durham. The other nine are mainly former teacher training colleges which have become universities or part of universities in the expansion of the university system

**Table 2.4: Top Ten Undergraduate Teacher Training Providers<sup>1</sup>**

Provider <sup>1</sup>	Trainees		Ofsted Grade <sup>2</sup>	Entry Score	QTS Score	Overall Score
	First Year	Final Year				
University of Durham	77	87	1	777.5	470.4	623.9
University of Winchester	219	303	1	624.6	583.8	604.2
University of Gloucestershire	119	90	1	541.3	597.5	569.4
University of Brighton, School of Education	294	343	1	551.4	526.4	538.9
University of Chester	124	175	1	483.7	478.6	481.1
University of Northumbria at Newcastle	108	119	1	477.4	467.7	472.5
University of Chichester	138	148	1	389.6	553.8	471.7
St Mary's University College	182	166	1	350.5	592.0	471.3
University of Derby	117	135	1.5	703.1	563.3	633.2
University of Greenwich	66	92	1.5	478.1	510.0	494.1

1. Taken from Table A.4 in the appendix which gives the full listing.

2. In some cases the primary and secondary training programmes receive different Ofsted grades, in which case they are added and halved as in the cases of Derby and Greenwich.

### 3. Qualifications and Characteristics of the Entrants

#### Entry Qualifications

- 3.1. In this, and the following chapter, we examine in more detail the elements underpinning the rankings of Chapter 2. First, we look at the qualifications of the entrants. In the past we have compared qualifications on the basis of the percentage of good degrees, but so many university students are now obtaining at least an upper-second that we have decided to create a scale from the degree classes.

**Table 3.1: Top Ten for Entry Qualifications**

Provider	First-Year Trainees	% First	% Upper Second	% Good Degrees	Entry Score
University of Cambridge	344	33.4	61.3	94.7	775.7
The King Edward's Consortium, Birmingham	28	35.7	50.0	85.7	745.2
University of Buckingham	14	28.6	57.1	85.7	727.4
The Pimlico-London SCITT	9	44.4	33.3	77.7	722.3
Cramlington Teaching School Alliance SCITT	5	20.0	80.0	100.0	708.4
Royal Academy of Dance	24	25.0	66.7	91.7	687.8
Pennine Lancashire SCITT	13	30.8	53.8	84.6	680.0
Leeds Beckett University	85	24.7	63.5	84.9	673.2
Devon Primary SCITT	38	23.7	65.8	89.5	666.1
George Spencer Academy SCITT	32	34.4	43.8	78.2	662.0

1. Entry qualifications score arrive at by giving 10 points for a first, 7 points for a 2i, 4 points for a 2ii and 2 for any other degree class, then standardizing. Unknowns and overseas degrees omitted.

- 3.2. Table 3.1 has a familiar look with Cambridge University and the King Edward's Consortium in the top two places, and this is not a surprise since entry qualifications is a major contributor to the overall score. But there are some providers among the top ten we have not met before. The University of Buckingham, Pennine Lancashire SCITT and Leeds Beckett University have highly qualified entrants but are not rated 'outstanding' so they come further down the main table. The Royal Academy of Dance has 92% entering on good degrees, but a below average proportion go on to teach. Table 3.1 also brings out the differences in the big differences in the proportions of firsts and upper-seconds, underlining the need for a scale rather than the category 'good degree'.
- 3.3. Table 3.2 shows the primary and secondary provision on their own. The universities are more prominent than in the rankings overall, taking eight of the top ten places for primary (but only three for secondary). In the primary table, however, it is a SCITT, the Billericay Educational Consortium, which has the best qualified entrants above even Cambridge University. Leeds Beckett University has a strong intake for both primary and secondary. Buckingham's score is only for a small part of a very large teacher training department since most of its trainees are funded independently and not through the teaching agency.

**Table 3.2: Primary and Secondary Providers<sup>1</sup> with Best Qualified Entrants**

Primary <sup>2</sup>	Entry Score <sup>3</sup>	Secondary <sup>2</sup>	Entry Score <sup>3</sup>
Billericay Educational Consortium	759.3	University of Cambridge	764.8
University of Cambridge	757.0	The King Edward's Consortium,	737.2
University of Buckingham	710.7	The Pimlico-London SCITT	713.6
University of Manchester	693.0	Cramlington Teaching School Alliance	699.4
University of The West of England	683.1	Harris ITT	699.4
Manchester Metropolitan University	673.5	Royal Academy of Dance	678.2
University of Chester	668.0	Redcar and Cleveland TTP	670.1
Leeds Beckett University	665.8	University of Winchester	670.1
Devon Primary SCITT	657.6	Pennine Lancashire SCITT	670.1
University of Northampton	655.8	Leeds Beckett University	651.7

1. Taken from Tables A2 and A3 in the Appendix which give the full listing.

2. Primary providers and secondary providers standardised as one group so the scores are directly comparable. The standardised scores may differ from the overall standardised scores since the primary and secondary provision of the same provider may differ widely.

3. Degree score for UK graduates arrived at by assigning 10 points for a first, '7' for an upper-second, '4' for a lower second and '2' for a third or a pass.

- 3.4. Table 3.3 shows the undergraduate providers whose entrants score highest on UCAS points. Durham tops both the entry qualifications and overall lists, but in the rest of the table there are differences indicating that although the entry score is important it can be outweighed by outcomes and inspection grade.

**Table 3.3: UCAS Points for Undergraduate ITT**

Undergraduate ITT Providers	First Yr Intake	UCAS Points <sup>1</sup>
University of Durham	77	402.4
University of Derby	117	382.4
University of Reading	65	373.1
University of the West of England	131	371.8
University of Winchester	219	361.3
York St John University	181	353.5
University of Huddersfield	25	352.5
Edge Hill University	537	347.3
University of Sunderland	111	344.8
University of Brighton, School of Education	294	341.6

1. The current UCAS scale awards 140 points for A\*, 120 for an A grade and 100 for a B grade.

### Characteristics of the Entrants

- 3.5. Just who are the people coming forward for teacher training? Table 3.4 shows that three-quarters are female, ten per cent come from the ethnic minorities, over two-fifths are older than 24 years, and four-fifths are on postgraduate programmes. But there is appreciable variation between the different pathways. The university trainees, over 40 per cent of whom are on undergraduate teacher training degrees, are younger, with fewer males and fewer from ethnic minorities.

3.6. There are also important differences in recruitment to the different postgraduate routes. SCITTs and School Direct attract more men to primary teaching, more from the ethnic minorities, more aged 25 and over.

**Table 3.4: Postgraduate Trainee Characteristics by Phase and Route**

Characteristic	Primary				Secondary				All
	HEI	SCITT	SDfee	SDsal	HEI	SCITT	SDfee	SDsal	
%Male	11.5	21.1	24.1	26.8	33.6	39.3	39.0	43.2	24.5
%Ethnic Minority	6.8	9.5	7.3	11.5	15.4	7.5	8.9	12.2	9.9
%Age25+	25.8	59.3	59.9	90.7	40.9	48.9	51.4	84.0	43.1
%Postgraduate	57.4	100.0	100.0	100.0	89.6	100.0	100.0	100.0	81.0
%Non UK Degree	1.2	0.6	1.4	3.0	4.1	2.4	3.8	8.0	2.6

3.7. In Table 3.5 we give some idea of the trends in recruitment since the Teacher Training Agency first published its Profiles in 1998 (they come out two years after entry to take into account destinations). Over the two decades there have been many changes to the teacher training system, but nevertheless it is possible to discern a broad picture.

**Table 3.5: Changing Postgraduate Intakes**

Characteristic	Year of Entry							
	1996	1998	2001	2004	2007	2010	2012	2014
<b>Primary</b>								
%Male	14	13	13	13	14	18	18	16
%Ethnic Minority	5	5	6	8	8	9	9	7
%Age25+	n/a	37	44	43	38	41	40	39
%Postgraduate	41	44	54	58	57	60	62	71
<b>Secondary</b>								
%Male	43	38	37	38	37	38	37	36
%Ethnic Minority	7	7	8	11	15	14	16	13
%Age25+	n/a	55	56	56	56	54	53	48
%Postgraduate	86	88	93	95	95	95	96	94

3.8. The percentage of males in primary has increased while that in secondary has decreased. The proportion of trainees from the ethnic minorities has increased, particularly in secondary. Secondary trainees are older than those in primary, but in both phases the age has tended to come down from its high point at the turn of the millennium. Government changes to the system are reflected in increases in the proportion of postgraduate trainees.

## 4. Outcomes

- 4.1. Table 4.1 shows the outcomes of undergraduate and postgraduate teacher training in terms of successful completion (QTS) and becoming a teacher. The comparison is of final-year trainees so any drop-out undergraduate degree courses before the final year is not counted.

**Table 4.1: Outcomes for Final-Year Trainees**

Providers	Final Year Trainees	Awarded QTS	% Awarded QTS	In Post	% In Teaching <sup>1</sup>
Undergraduate	7,336	6,265	85.4	5,407	73.7
Postgraduate	26,607	24,355	91.5	21,579	81.1
<b>Total</b>	<b>33,943</b>	<b>30,620</b>	<b>90.2</b>	<b>26,986</b>	<b>79.5</b>

1. Percentage of final-year trainees. The DfE expresses employment as a percentage of only those achieving QTS so the figures are higher.

- 4.2. Fewer of the undergraduate trainees take teaching posts. Only 74% of those in their final year do so compared with 81% of those on postgraduate courses. When we disaggregate the postgraduate routes as in Chart 4.2 we can see big differences here also. Appreciably more of those trained in schools become teachers than those on university courses.

**Chart 4.2: Postgraduate Trainees in Teaching Post**

Route	Primary		Secondary		Total	
	Final Year Trainees	% In Teaching	Final Year Trainees	% In Teaching	Final Year Trainees	% In Teaching <sup>1</sup>
HEI	7,433	78.0	8,035	78.3	15,468	78.1
SCITT	1,069	86.9	982	91.0	2,051	88.9
SD (fee)	3,137	84.0	3,154	85.7	6,291	84.9
SD (sal)	1,548	84.6	1,249	81.7	2,797	83.3
<b>Total</b>	<b>13,187</b>	<b>80.9</b>	<b>13,420</b>	<b>81.3</b>	<b>26,607</b>	<b>81.1</b>

1. Percentage of final-year trainees. The DfE expresses employment as a percentage of only those achieving QTS so the figures are higher.

- 4.3. The School Direct programmes may be partnered with either HEIs or SCITTs. When the HEIs and SCITTs are compared, 90 per cent of those on school-led programmes became teachers compared with 79 per cent of those on the university-led.
- 4.4. This striking difference is underlined by listing the providers in which all of the final-year trainees made it to the classroom. Table 4.3 shows that there were 17. Not one was a university.

**Table 4.3: 100% of Final Year Trainees in Teaching**

<b>Provider</b>	<b>Final Year Trainees</b>
Surrey South Farnham SCITT	56
Redcar and Cleveland Teacher Training Partnership	36
The Havering Teacher Training Partnership	31
Alban Federation	30
Poole SCITT	30
South Coast SCITT	30
West Berkshire Training Partnership	21
St Joseph's College Stoke Secondary Partnership	20
Norfolk Teacher Training Centre	19
St Georges Academy Partnership	18
The Hampshire LEARN SCITT Partnership	18
Teach@SJB	17
The Beauchamp ITT Partnership	17
North Essex Teacher Training (NETT)	16
Stourport SCITT	11
Isle of Wight SCITT	10
Cramlington Teaching School Alliance SCITT	5

**Table 4.4: All Final-Years Primary and Secondary Trainees Entered Teaching**

<b>Primary</b>	<b>Final Yr Trainees</b>	<b>Secondary</b>	<b>Final Yr Trainees</b>
Surrey South Farnham SCITT	56	The Havering TTP	31
Poole SCITT	30	Alban Federation	30
South Coast SCITT	30	Billericay Educational Consortium	20
Redcar and Cleveland TTP	22	St Joseph's College Stoke Partnership	20
The Bedfordshire Schools TP SCITT	21	Norfolk Teacher Training Centre	19
West Berkshire Training Partnership	17	Hampshire LEARN SCITT Partnership	18
The Grand Union Training Partnership	10	St Georges Academy Partnership	18
George Abbot SCITT	9	The Beauchamp ITT Partnership	17
Stourport SCITT	5	Leeds Beckett University	16
		North Essex Teacher Training	16
		Redcar and Cleveland TTP	14
		Teach@SJB	13
		Isle of Wight SCITT	10
		Teach East	9
		Stourport SCITT	6
		Cramlington Teaching School Alliance	5

1. Providers with fewer than 5 final-year trainees in either phase omitted for that phase. Both primary and secondary provision had a 100% record in the Redcar and Cleveland Teacher Training Partnership and the Stourport SCITT.

4.5. When primary and secondary training are looked at on their own, as in Table 4.4, again the greater effectiveness of the school-based routes is evident. All of the primary programmes and all but one of the secondary programmes is school-led. Even in the exception, Leeds Beckett, 14 of the 16 the trainees were not on university courses but on partnered school direct programmes.

**Table 4.5: Top Ten UG Providers for Teaching Take-Up**

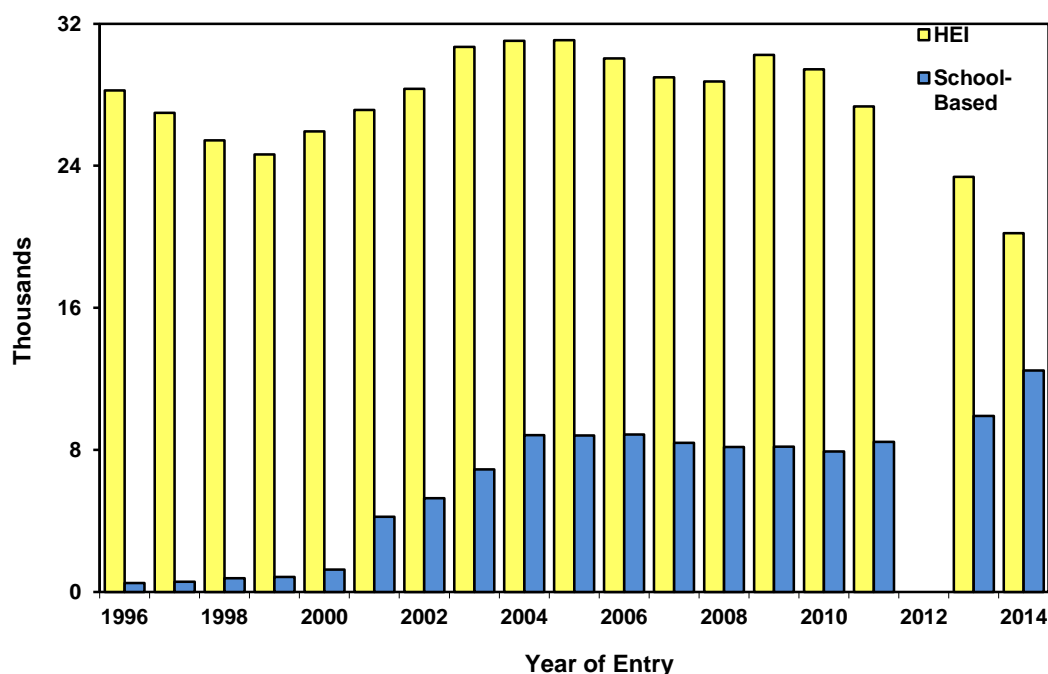
<b>Provider</b>	<b>Final Year Trainees</b>	<b>% In Teaching</b>
Nottingham Trent University	104	91.3
Liverpool Hope University	159	91.2
St Mary's University College	166	89.8
University of Northampton	117	89.7
University of Reading	115	89.6
University of Winchester	303	89.1
York St John University	140	88.6
University of Derby	135	88.1
Bishop Grosseteste University	104	87.5
Oxford Brookes University	108	87.0

4.6. Lower take-up of teaching posts by those training on undergraduate degree courses is brought out in Table 4.5. None the providers had all of their final-year trainees becoming teachers. The best was Nottingham Trent University with 91.3 per cent. As we saw in Table 4.1, the average was 73.7 per cent.

## 5. Which is Better: School-Led or University-Led?

5.1. It is government policy<sup>2</sup> to “continue to move to an increasingly school-led ITT system”. Figure 5.1 shows how this is unfolding. Training places on university courses have been reduced by a third since 2009 (30,246 down to 20,195), while those on school-led programmes have risen by over a half (8,183 up to 12,465). But as is evident from the numbers the increase does not balance the fall. In fact, the number in training has fallen by almost 6,000. This decline has led to fears that government policy is exacerbating the shortage of teachers.

**Figure 5.1: ITT Intakes<sup>1</sup> by Route<sup>2</sup>**



1. Trend data to 2013 taken from the Good Teacher Training Guide 2013, Table A8, page 47.

2. School-based refers to SCITT and School Direct. Teach First is also included since this is how it was originally classified. HEI number are those on postgraduate or undergraduate ITT courses.

3. Year is the year of entry; DfE's Performance Profiles are published two years later.

5.2. But as Table 5.1 shows there are reasons for optimism. While the number of trainees is falling those on school-based programmes are much more likely to become teachers. Ninety per cent took up teaching posts against 79% of university postgraduate trainees and 74% undergraduate trainees. Table 4.3 showed there were no universities among the 17 providers where all final-year trainees took-up teaching posts. Those training in schools were also more likely to complete their programme successfully and achieve QTS status. A likely explanation is that those opting to train in schools are more committed to teaching, and schools select them more carefully seeing them as possible future colleagues.

<sup>2</sup> DfE (March 2016). *Educational Excellence Everywhere*, Cm 9230, [https://www.gov.uk/government/uploads/system/uploads/attachment\\_data/file/508447/Educational\\_Excellence\\_Everywhere.pdf](https://www.gov.uk/government/uploads/system/uploads/attachment_data/file/508447/Educational_Excellence_Everywhere.pdf)

**Table 5.1: HEI and School Provision<sup>1</sup> Compared**

<b>Provider Type</b>	<b>N<sup>2</sup></b>	<b>Entry Score</b>	<b>% Graded Outstanding</b>	<b>QTS Score</b>	<b>% In Teaching</b>
HEI	74	533.8	29.7	451.4	79.0
SCITT	116	479.0	39.7	533.5	89.9

1. HEI and SCITTs refers to the type of provider. Both can partner school direct schemes.

2. Six providers were omitted from the comparisons: four because they had fewer than five first-year trainees - Keele University; Mersey, Manchester & Lancashire (MML) SCITT; North West Teaching School Alliance; University of Bath; and two because there was no Ofsted grade we could find - Matthew Moss Teacher Training Partnership and North West and Lancashire Consortium.

5.3. Table 5.1 also shows that Ofsted rated 40 per cent of the SCITTs ‘outstanding’ compared with 30 per cent of the HEI. The postgraduate courses in university on, average, attracted trainees with better degrees. But, in part, this could be because they are younger. There has been rampant degree inflation in recent years with many more receiving good degrees. The older trainees going into school-based training are likely to have earned their degrees at times when fewer firsts and upper-seconds were awarded.

## Appendix 1: Population and Methods

A.1 CEER rankings are based on data collected by the National College of Teaching and Leadership, which is now an executive agency of the DfE. The NCTL publishes data on the teacher training system two years after entry to allow for trainees to be tracked into employment, so latest data available are for the training year 2014-15. Although it publishes information about individual providers it does not compare them. This is where the Good Teacher Training Guide comes in.

### Population

A.2 As the government has sought to ensure that teacher training takes place in schools rather than through university courses, the system has become ever more diverse and complex. Table A.1 shows where most of the places were in 2014-15, but in addition there were the trainees in the programmes run by the charity Teach First (where data returns are not mandatory), training places not funded by the DfE as in the large education department at the University of Buckingham, or residual trainees on the EBITT route which has been ended.

**Table A1: Teacher Training Intake, 2014**

Route	First Year Trainees	Percentages
<b>Higher Education Institutions (HEI)</b>	<b>14,233</b>	<b>56.2</b>
HEI	14,233	56.2
<b>School-Led</b>	<b>11,102</b>	<b>43.8</b>
School Centred Initial Teacher Training (SCITT)	2,044	08.1
School Direct (Fee)	6,178	24.4
HEI Partner	(4,419)	(71.5)
SCITT Partner	(1,759)	(28.5)
School Direct (Salaried)	2,789	11.0
HEI Partner	(1,469)	(52.7)
SCITT Partner	(1,320)	(47.3)
<b>Postgraduate</b>	<b>25,335</b>	<b>81.0</b>
<b>Undergraduate</b>	<b>5,962</b>	<b>19.0</b>
<b>Total<sup>1</sup></b>	<b>31,297</b>	<b>100.0</b>

Source: DfE (28.07.17) Initial teacher training performance profiles for the academic year 2014-15, Figure 1, page 6.

1. Teach First (N=1,363), University of Buckingham independently-funded trainees, and legacy EBITTs not included.

A.3 In the Good Teacher Training Guide we make several sorts of comparison. We compare providers, types of provision, and the different routes and phases.

- **Providers:** performance data include all the training routes the providers offer including their school direct partnerships.
- **Types:** two types are compared, HEI and School-Led. School-Led includes the SCITTs and School Direct whether the partner is a SCITT or an HEI.
- **Routes:** Four routes are compared, HEI, SCITT, SD (fee), and SD (salaried) as set out in the table.

- **Phases:** It has been government policy to shift the balance towards postgraduate training, and most of the data available are for postgraduate programmes. There is some information available for primary programmes and where possible we make comparisons between the two phases.

### **Ranking of Providers**

A.4 The rankings of both postgraduate and undergraduate providers are based on entry qualifications, Ofsted grade and outcomes. The scores for each component were arrived at as follows.

#### **Entry Qualifications**

A.5 Our measure of postgraduate entry qualifications is the degree classes of those entering on a UK degree. A 'first' is scored 10 points, an 'upper-second', 7 points, a 'lower-second', 4 points, and any other degree, 2 points. The scores are standardised and set to a mean of 500 and a standard deviation of 100. This is different from what we have done in the past when we took the percentage of good degrees. This, however, no longer differentiates sufficiently well as so many now graduate with a 'first' or '2i'. For undergraduate courses, the measure continues to be standardised average UCAS points score.

#### **Quality**

A.6 We have had to radically change our measure of quality since it is no longer possible to generate our old scale where we combined Ofsted grades with the ratings of newly-qualified teachers. Nearly all the providers are graded by Ofsted as '1' or '2', and information is no longer available on NQT ratings at the provider level. We have, therefore, made our comparisons within the categories 'outstanding', 'good' and 'other' with the order overall being determined by into which of the categories a provider falls.

#### **Outcomes**

A.7 In the past we have measured outcomes as the proportion of the final-year students in teaching six months after completing training as recorded in the Destination of Leavers of Higher Education Survey, which is intended to be completed by all leavers, with a special section for teacher training. We have become increasingly concerned, however, by some large shortfalls for some providers, possibly because those trained could not be bothered to return the questionnaire.

A.8 This year we have switched to the percentage achieving QTS, which is returned by the providers. We have done this reluctantly both because the point of the training is to equip people to become teachers and the numbers actually taking up posts would seem to be the acid test of this, but also because the QTS scale is less good at telling providers apart. Nevertheless, we have gone with it. The percentages achieving QTS were standardised and set to a mean of 500 and a standard deviation of 100. We do also, however, include analyses of entry to teaching.

## Appendix 2: League Tables

**Table A1: All Postgraduate Teacher Trainers**

Provider <sup>1,2</sup>	Trainees		Ofsted Grade	Entry Score	QTS Score	Overall Score
	First Year	Final Year				
University of Cambridge	344	352	1	775.7	607.4	691.5
The King Edward's Consortium, Birmingham	28	28	1	745.2	627.6	686.4
The Pimlico-London SCITT	9	9	1	722.3	627.6	675.0
Cramlington Teaching School Alliance SCITT	5	5	1	708.4	627.6	668.0
Devon Primary SCITT	38	38	1	666.1	627.6	646.9
Loughborough University	46	53	1	616.0	627.6	621.8
Leicester and Leicestershire SCITT	56	56	1	628.8	594.5	611.6
North East Partnership SCITT (Physical Education)	30	30	1	646.5	566.8	606.7
Billericay Educational Consortium SCITT	48	51	1	605.7	590.8	598.2
Alban Federation	29	30	1	568.7	627.6	598.2
GITEP SCITT	71	72	1	619.5	576.0	597.8
University of Exeter	441	456	1	632.1	559.5	595.8
University of Oxford	172	174	1	636.8	531.8	584.3
University of Bristol	192	195	1	625.7	542.9	584.3
Redcar and Cleveland Teacher Training Partnership	36	36	1	535.7	627.6	581.7
ARK Teacher Training	62	62	1	549.9	598.2	574.0
University of Birmingham	374	399	1	593.3	553.9	573.6
Teach@SJB	17	17	1	505.8	627.6	566.7
Suffolk and Norfolk Primary SCITT	65	65	1	555.5	570.5	563.0
The Keele and North Staffordshire Primary SCITT	71	71	1	488.6	627.6	558.1
Bromley Schools Collegiate	87	87	1	591.4	522.6	557.0
Cornwall SCITT	52	52	1	584.6	520.8	552.7
University of Manchester	387	403	1	637.0	467.4	552.2
The OAKS (Ormiston and Keele SCITT)	55	55	1	572.6	526.3	549.5
Devon Secondary Teacher Training Group (DSTTG)	31	30	1	646.5	443.4	545.0
Royal Academy of Dance	24	24	1	687.8	397.4	542.6
Shotton Hall SCITT	46	46	1	535.3	548.4	541.8
Mid Somerset Consortium for Teacher Training	41	43	1	496.9	585.3	541.1
Poole SCITT	30	30	1	440.1	627.6	533.9
University of Durham	225	234	1	626.1	437.9	532.0
University of Nottingham <sup>3</sup>	366	375	1	562.1	489.5	525.8
Institute of Education, University of London	1182	1223	1	564.6	482.1	523.3
Buile Hill Visual Arts College SCITT	18	18	1	414.5	627.6	521.1
University of Northumbria at Newcastle	297	311	1	539.2	502.4	520.8
Surrey South Farnham SCITT	57	56	1	403.6	627.6	515.6
University of Chichester	245	255	1	533.2	496.8	515.0
University of Portsmouth	90	93	1	555.9	469.2	512.6
Bath Spa University	523	547	1	538.0	485.8	511.9
Stockton-on-Tees Teacher Training Partnership	47	46	1	468.6	548.4	508.5
Gateshead 3-7 SCITT	50	51	1	423.6	590.8	507.2
Cornwall SCITT Partnership	36	37	1	481.4	528.2	504.8
Carmel Teacher Training Partnership (CTTP)	126	127	1	450.2	555.8	503.0
Compton SCITT	7	7	1	378.2	627.6	502.9
University of Warwick	275	303	1	528.5	474.7	501.6
Harris ITT	38	38	1	517.3	482.1	499.7
Dorset Teacher Training Partnership	24	24	1	593.3	397.4	495.3
King's College London	208	211	1	517.7	471.0	494.4
University of Brighton, School of Education	333	351	1	546.6	437.9	492.3
Chiltern Training Group	36	36	1	401.1	576.0	488.6
2Schools Consortium	51	51	1	455.6	518.9	487.3

Portsmouth Primary SCITT	36	36	1	446.9	524.5	485.7
The Hampshire LEARN SCITT Partnership	18	18	1	343.7	627.6	485.7
Primary Catholic Partnership SCITT	26	25	1	411.2	553.9	482.6
Wakefield Regional Partnership for ITT	64	64	1	416.2	541.0	478.6
North Tyneside SCITT	37	38	1	467.4	482.1	474.7
St Mary's University College	401	418	1	514.9	428.7	471.8
University of Gloucestershire	245	252	1	475.8	467.4	471.6
Kingsbridge EIP SCITT	73	74	1	430.0	502.4	466.2
Two Mile Ash ITT Partnership	33	32	1	415.8	513.4	464.6
Durham SCITT	52	52	1	440.3	450.8	445.6
Bourton Meadow ITT Centre	24	24	1	405.0	474.7	439.9
Brunel University	183	190	1	466.8	384.5	425.6
SCITTELS	57	58	1	399.9	437.9	418.9
Wildern Partnership	33	33	1	411.9	404.7	408.3
High Force Education SCITT	38	38	1	427.1	384.5	405.8
Somerset SCITT Consortium	67	67	1	427.5	353.1	390.3
East Sussex Teacher Training Partnership	26	25	1	322.7	406.6	364.6
The Open University	5	152	1	502.1	180.0	341.0
University of Sussex	215	221	1.5	554.7	618.4	586.6
University of Leicester	239	244	1.5	636.0	491.3	563.7
University of Chester	326	341	1.5	628.8	471.0	549.9
University of Winchester	151	166	1.5	560.5	472.9	516.7
Staffordshire University	86	86	1.5	483.9	498.7	491.3
University of Derby	248	260	1.5	538.6	443.4	491.0
University of Reading	315	319	1.5	503.7	454.5	479.1
York St John University	185	207	1.5	524.3	395.5	459.9
University of Huddersfield	97	98	1.5	551.2	327.4	439.3
Oxford Brookes University	288	298	1.5	501.8	325.5	413.7
Jewish Teacher Training Partnership	40	39	1.5	462.2	343.9	403.1
University of Buckingham	14	14	2	727.4	627.6	677.5
George Spencer Academy SCITT	32	33	2	662.0	627.6	644.8
University of Northampton	80	82	2	662.0	537.4	599.7
South Coast SCITT	30	30	2	564.0	627.6	595.8
Southend SCITT	25	25	2	636.2	553.9	595.1
Royal Borough of Windsor and Maidenhead SCITT	29	30	2	541.9	627.6	584.8
Pennine Lancashire SCITT	13	13	2	680.0	485.8	582.9
Norfolk Teacher Training Centre	19	19	2	530.3	627.6	579.0
Leicestershire Secondary SCITT	27	26	2	529.1	627.6	578.4
Leeds Beckett University	85	85	2	673.2	476.6	574.9
Leeds SCITT	34	35	2	511.8	627.6	569.7
Southfields Academy Teaching School SCITT	12	12	2	498.5	627.6	563.1
George Abbot SCITT	61	55	2	629.0	493.1	561.1
Stourport SCITT	11	11	2	490.7	627.6	559.2
Essex Primary SCITT	59	59	2	584.6	533.7	559.1
Wessex Schools Training Partnership	11	19	2	584.6	530.0	557.3
St Georges Academy Partnership	19	18	2	486.8	627.6	557.2
Wandsworth Primary Schools Consortium	38	38	2	486.8	627.6	557.2
The Learning Institute South West	44	44	2	519.0	585.3	552.1
Manchester Metropolitan University	748	776	2	616.6	482.1	549.4
Essex Teacher Training	130	130	2	513.0	585.3	549.1
North Essex Teacher Training (NETT)	17	16	2	468.6	627.6	548.1
Bournemouth Poole and Dorset Secondary TP	31	31	2	515.9	568.7	542.3
Essex and Thames Primary SCITT	78	71	2	532.4	550.3	541.3
Roehampton University	394	428	2	617.0	463.7	540.3
South West Teacher Training	27	27	2	584.6	491.3	538.0

The Grand Union Training Partnership	42	42	2	533.8	539.2	536.5
The Basingstoke Alliance SCITT	19	19	2	443.4	627.6	535.5
University of Bedfordshire	108	112	2	587.7	480.3	534.0
University of Newcastle Upon Tyne	127	135	2	533.6	531.8	532.7
Tendring Hundred Primary SCITT	40	43	2	522.7	541.0	531.9
University of Sheffield	81	85	2	584.6	476.6	530.6
St Joseph's College Stoke Secondary Partnership	20	20	2	429.8	627.6	528.7
Arthur Terry National Teaching School Alliance	19	19	2	619.1	434.2	526.6
Mid Essex ITT	23	23	2	503.9	548.4	526.2
Tudor Grange SCITT	19	19	2	519.4	530.0	524.7
Ashton on Mersey School SCITT	48	48	2	455.6	588.9	522.3
University of The West of England	233	236	2	603.4	439.7	521.6
The Beauchamp ITT Partnership	17	17	2	414.5	627.6	521.1
Kent and Medway Training	76	77	2	485.7	555.8	520.8
West Berkshire Training Partnership	22	21	2	410.8	627.6	519.2
Colchester Teacher Training Consortium	44	42	2	493.4	539.2	516.3
University of East Anglia	291	299	2	515.5	517.1	516.3
The Havering Teacher Training Partnership	32	31	2	397.6	627.6	512.6
University of Worcester	390	409	2	493.2	528.2	510.7
Liverpool Hope University	303	320	2	531.0	489.5	510.2
University of Hertfordshire	296	304	2	532.6	487.6	510.1
University of Southampton	301	309	2	546.4	472.9	509.7
Suffolk and Norfolk Secondary SCITT	46	46	2	584.6	426.8	505.7
Suffolk & Norfolk GTP Provider	114	114	2	456.0	546.6	501.3
West Midlands Consortium	101	103	2	511.1	483.9	497.5
Cumbria Primary Teacher Training	31	31	2	364.4	627.6	496.0
University of Leeds	251	259	2	581.3	406.6	493.9
Three Counties Alliance SCITT	27	27	2	425.9	559.5	492.7
The Bedfordshire Schools Training Partnership	72	71	2	382.1	601.8	492.0
Oxon-Bucks SCITT	62	61	2	473.4	506.0	489.7
CfBT Education Trust SCITT	98	98	2	440.1	533.7	486.9
Canterbury Christ Church University	659	799	2	521.0	450.8	485.9
Bradford College <sup>4</sup> (SCITT)	116	117	2	486.0	485.8	485.9
The Shire Foundation	48	48	2	419.5	550.3	484.9
University of Cumbria	871	951	2	458.1	511.6	484.8
Newman University	232	246	2	504.3	463.7	484.0
University of Wolverhampton	285	291	2	498.5	463.7	481.1
Leeds Trinity University	202	206	2	427.8	530.0	478.9
Buckingham Partnership	41	41	2	419.9	537.4	478.6
Merseyside, Cheshire and Greater Manchester TTC	33	33	2	440.8	515.3	478.0
e-Qualitas	173	163	2	451.1	504.2	477.6
Sheffield Hallam University	516	524	2	514.2	437.9	476.1
Liverpool John Moores University	212	220	2	554.3	393.7	474.0
Doncaster ITT Partnership	72	72	2	469.9	474.7	472.3
Thamesmead SCITT	13	13	2	457.7	485.8	471.7
Educate Teacher Training	120	121	2	474.6	460.0	467.3
North West SHARES SCITT	44	44	2	387.5	544.7	466.1
Forest Independent Primary Collegiate SCITT	69	69	2	436.2	495.0	465.6
University of Plymouth	173	183	2	520.2	406.6	463.4
University of Hull	242	283	2	454.2	458.1	456.2
Birmingham City University	388	434	2	497.5	410.3	453.9
University College Birmingham	61	63	2	418.7	482.1	450.4
The Pilgrim Partnership SCITT	112	113	2	398.4	496.8	447.6
Goldsmiths University	289	319	2	470.3	425.0	447.6
Ninestiles ITT Consortium and BPTP	45	46	2	341.5	548.4	444.9

London Metropolitan University	173	177	2	404.0	482.1	443.1
University of Sunderland	151	158	2	476.3	406.6	441.4
The Cambridge Partnership	77	81	2	367.5	513.4	440.4
Cambridge Teaching Schools Network TP	46	48	2	517.5	358.7	438.1
Bishop Grosseteste University	300	327	2	471.3	402.9	437.1
University of York	75	79	2	451.7	417.6	434.7
Kingston University	244	249	2	438.3	428.7	433.5
North Lincolnshire SCITT Partnership	24	23	2	300.8	548.4	424.6
Nottingham Trent University	244	252	2	502.5	342.1	422.3
University of East London	526	539	2	415.4	428.7	422.0
Kirklees and Calderdale SCITT	73	71	2	370.2	471.0	420.6
Isle of Wight SCITT	10	10	2	213.1	627.6	420.4
University of Greenwich	241	279	2	459.5	364.2	411.9
Edge Hill University	967	1035	2	441.8	380.8	411.3
Teaching London: LDBS SCITT	116	116	2	358.0	452.6	405.3
Northampton Teacher Training Partnership	18	18	2	469.9	320.0	394.9
Middlesex University	222	229	2	423.6	362.4	393.0
University of St Mark & St John	89	97	2	554.7	229.7	392.2
Mersey Boroughs ITT Partnership	15	15	2	268.2	504.2	386.2
The Kemnal Academies Trust (TKAT)	40	40	2	453.3	305.2	379.3
Swindon Secondary Schools TAITE	9	9	2	300.8	423.1	362.0
Bradford College <sup>4</sup> (HEI)	116	117	2	375.5	343.9	359.7
London South Bank University	36	28	2	329.7	364.2	347.0
Titan Partnership Ltd	23	23	2	225.7	388.1	306.9
The Solent SCITT	17	17	2	520.2	86.0	303.1
Hibernia College UK Limited	40	65	2	506.6	89.7	298.2
Services For Education SCITT	12	12	2	103.1	320.0	211.5
Teach East	30	30	3	446.9	566.8	506.9
Anglia Ruskin University	141	151	3	449.2	517.1	483.2
Kent County Council	46	47	4	416.0	548.4	482.2

1. Providers with fewer than five first-year trainees omitted: Keele University; Mersey, Manchester & Lancashire SCITT; North West Teaching School Alliance; University of Bath.

2. Providers with No Ofsted grade omitted: Matthew Moss Teacher Training Partnership; North West and Lancashire Consortium.

3. Has absorbed Outstanding Primary Schools.

4. Bradford College appears twice because it was in the data twice as it is in the process of changing its provision from HEI to SCITT. By coincidence the first-year and final-year trainee numbers are the same, but as Tables A2 and A3 show the splits between primary and secondary are different.

NB Where providers omitted, their trainees are included in the totals. This applies to all listings in this Appendix.

**Table A2: Postgraduate Primary Teacher Trainers**

Provider <sup>1</sup>	Trainees		Ofsted Grade	Entry Score	QTS Score	Overall Score
	First Year	Final Year				
University of Cambridge	144	150	1	757.0	631.9	694.5
Billericay Educational Consortium SCITT	28	31	1	759.3	584.1	671.7
Devon Primary SCITT	38	38	1	657.6	645.3	651.5
University of Manchester	187	193	1	693.0	566.9	629.9
Leicester and Leicestershire SCITT	56	56	1	625.2	610.9	618.1
University of Birmingham	137	138	1	623.4	589.8	606.6
University of Exeter	178	185	1	635.4	572.6	604.0
Bromley Schools Collegiate	33	33	1	619.5	587.9	603.7
University of Sussex	65	66	1	545.7	645.3	595.5
The Keele and North Staffordshire Primary SCITT	71	71	1	503.8	645.3	574.6
Suffolk and Norfolk Primary SCITT	65	65	1	561.8	586.0	573.9
University of Warwick	59	64	1	558.2	586.0	572.1
University of Leicester	126	130	1	643.3	482.7	563.0
Shotton Hall SCITT	10	10	1	479.7	645.3	562.5
ARK Teacher Training	24	24	1	478.1	645.3	561.7
Redcar and Cleveland Teacher Training Partnership	22	22	1	465.0	645.3	555.2
University of Chester	172	178	1	668.0	440.6	554.3
Poole SCITT	30	30	1	461.8	645.3	553.6
Surrey South Farnham SCITT	57	56	1	430.2	645.3	537.7
Stockton-on-Tees Teacher Training Partnership	32	31	1	475.2	584.1	529.7
Bath Spa University	373	392	1	557.6	498.0	527.8
Gateshead 3-7 SCITT	50	51	1	447.5	607.1	527.3
University of Durham	107	109	1	652.0	400.4	526.2
University of Northumbria at Newcastle	266	280	1	535.5	509.5	522.5
Institute of Education, University of London	391	418	1	552.5	490.3	521.4
Cornwall SCITT Partnership	36	37	1	497.6	542.0	519.8
University of Winchester	138	149	1	556.2	478.8	517.5
Durham SCITT	12	12	1	542.3	486.5	514.4
University of Reading	140	142	1	503.3	524.8	514.0
Kingsbridge EIP SCITT	27	27	1	441.3	574.5	507.9
2Schools Consortium	51	51	1	475.2	532.4	503.8
Portsmouth Primary SCITT	36	36	1	467.7	538.2	502.9
Primary Catholic Partnership SCITT	26	25	1	436.8	568.8	502.8
Dorset Teacher Training Partnership	24	24	1	594.5	406.1	500.3
University of Derby	236	247	1	547.5	452.0	499.7
University of Chichester	137	141	1	510.1	482.7	496.4
University of Gloucestershire	221	227	1	495.6	484.6	490.1
North Tyneside SCITT	37	38	1	485.4	494.1	489.8
St Mary's University College	218	230	1	491.1	486.5	488.8
Two Mile Ash ITT Partnership	33	32	1	440.7	526.7	483.7
University of Huddersfield	51	52	1	612.5	350.6	481.6
University of Brighton, School of Education	160	166	1	540.7	415.7	478.2
University of Nottingham <sup>3</sup>	135	140	1	524.2	427.2	475.7
Wakefield Regional Partnership for ITT	37	37	1	387.8	542.0	464.9
Bourton Meadow ITT Centre	24	24	1	431.4	486.5	459.0
Brunel University	134	139	1	478.8	425.3	452.0
Carmel Teacher Training Partnership (CTTP)	55	56	1	361.0	542.0	451.5
Jewish Teacher Training Partnership	33	32	1	477.4	406.1	441.7
SCITTELS	57	58	1	427.0	448.2	437.6
High Force Education SCITT	38	38	1	450.6	392.7	421.6
Somerset SCITT Consortium	67	67	1	450.9	360.2	405.5

Oxford Brookes University	234	240	1	494.7	295.1	394.9
East Sussex Teacher Training Partnership	26	25	1	360.1	415.7	387.9
Harris ITT	16	16	1	300.9	406.1	353.5
Wildern Partnership	12	12	1	274.1	325.7	299.9
University of Buckingham	14	14	2	710.7	645.3	678.0
The Grand Union Training Partnership	10	10	2	587.0	645.3	616.1
South Coast SCITT	30	30	2	569.1	645.3	607.2
University of Northampton	78	80	2	655.8	549.6	602.7
Royal Borough of Windsor and Maidenhead SCITT	29	29	2	550.0	645.3	597.6
University of Bedfordshire	42	43	2	638.1	555.4	596.7
The Learning Institute South West	27	27	2	527.4	645.3	586.4
George Abbot SCITT	9	9	2	510.3	645.3	577.8
Wandsworth Primary Schools Consortium	38	38	2	502.2	645.3	573.8
West Berkshire Training Partnership	18	17	2	492.4	645.3	568.9
Essex Primary SCITT	59	59	2	587.0	547.7	567.3
University of Newcastle Upon Tyne	41	46	2	526.0	603.2	564.6
University of The West of England	82	85	2	683.1	442.5	562.8
Stourport SCITT	5	5	2	479.7	645.3	562.5
Leeds Beckett University	69	69	2	665.8	452.0	558.9
Oxon-Bucks SCITT	42	42	2	517.2	599.4	558.3
Essex and Thames Primary SCITT	78	71	2	541.7	565.0	553.3
University of Southampton	139	143	2	553.0	551.6	552.3
University of East Anglia	145	151	2	583.2	519.0	551.1
Essex Teacher Training	64	64	2	478.1	614.7	546.4
Manchester Metropolitan University	257	266	2	673.5	415.7	544.6
Tendring Hundred Primary SCITT	40	43	2	533.3	555.4	544.4
Newman University	114	124	2	587.0	490.3	538.6
Roehampton University	262	293	2	619.3	450.1	534.7
CfBT Education Trust SCITT	44	44	2	460.9	601.3	531.1
Liverpool Hope University	150	159	2	556.9	501.8	529.4
University of Sunderland	39	40	2	601.1	454.0	527.5
Cumbria Primary Teacher Training	31	31	2	396.2	645.3	520.8
Staffordshire University	45	45	2	518.0	517.1	517.5
Canterbury Christ Church University	328	405	2	561.4	471.2	516.3
Doncaster ITT Partnership	43	43	2	512.1	511.4	511.7
Suffolk & Norfolk GTP Provider	68	68	2	432.5	589.8	511.2
The Shire Foundation	48	48	2	443.9	565.0	504.4
University of Worcester	217	228	2	477.4	528.6	503.0
Kent and Medway Training	12	12	2	512.4	486.5	499.5
University of Leeds	141	148	2	569.3	425.3	497.3
Merseyside, Cheshire and Greater Manchester TTC	33	33	2	462.4	528.6	495.5
University of Hertfordshire	163	169	2	527.1	463.5	495.3
The Bedfordshire Schools Training Partnership	22	21	2	343.1	645.3	494.2
Goldsmiths University	127	137	2	523.0	463.5	493.2
Bradford College (SCITT) <sup>4</sup>	89	89	2	534.2	452.0	493.1
Leeds Trinity University	89	89	2	378.0	603.2	490.6
Sheffield Hallam University	242	232	2	554.2	423.3	488.8
North West SHARES SCITT	44	44	2	416.2	559.2	487.7
Forest Independent Primary Collegiate SCITT	69	69	2	458.4	507.5	483.0
University of Hull	135	172	2	447.9	511.4	479.6
York St John University	170	192	2	539.6	415.7	477.6
University of Cumbria	570	640	2	444.5	505.6	475.1
Educate Teacher Training	81	81	2	516.3	432.9	474.6
Edge Hill University	124	131	2	443.0	499.9	471.5
Liverpool John Moores University	98	101	2	581.4	360.2	470.8

University College Birmingham	61	63	2	443.2	494.1	468.7
Kingston University	158	159	2	492.9	440.6	466.7
University of Plymouth	121	129	2	520.5	408.0	464.2
University of Greenwich	138	166	2	479.7	438.7	459.2
University of Wolverhampton	169	169	2	496.3	419.5	457.9
Birmingham City University	246	286	2	486.5	398.5	442.5
Bishop Grosseteste University	248	276	2	474.7	409.9	442.3
The Pilgrim Partnership SCITT	82	83	2	394.9	484.6	439.8
Middlesex University	106	112	2	498.8	371.7	435.2
The Kemnal Academies Trust (TKAT)	20	20	2	511.7	358.3	435.0
West Midlands Consortium	21	24	2	459.3	406.1	432.7
Teaching London: LDBS SCITT	106	106	2	394.2	465.4	429.8
The Cambridge Partnership	18	18	2	418.7	432.9	425.8
Cambridge Teaching Schools Network TP	15	15	2	587.0	262.6	424.8
Buckingham Partnership	10	10	2	390.3	454.0	422.1
e-Qualitas	45	47	2	430.5	400.4	415.5
Mersey Boroughs ITT Partnership	15	15	2	312.9	517.1	415.0
Kirklees and Calderdale SCITT	39	38	2	334.9	494.1	414.5
London Metropolitan University	81	85	2	381.0	442.5	411.7
Ninestiles ITT Consortium and BPTP	19	19	2	276.4	543.9	410.2
University of East London	255	265	2	419.4	392.7	406.1
University of St Mark & St John	67	73	2	570.2	226.2	398.2
North Lincolnshire SCITT Partnership	16	16	2	251.7	526.7	389.2
Nottingham Trent University	103	107	2	514.0	251.1	382.6
London South Bank University	36	28	2	366.2	371.7	368.9
Bradford College (HEI) <sup>4</sup>	67	68	2	434.8	279.8	357.3
Titan Partnership Ltd	14	14	2	293.2	371.7	332.4
Services For Education SCITT	12	12	2	169.9	325.7	247.8
Anglia Ruskin University	102	111	3	508.1	542.0	525.1
Teach East	21	21	3	442.1	553.5	497.8
Kent County Council	25	25	4	436.8	568.8	502.8

1. Providers with fewer than five first-year primary trainees omitted: George Spencer Academy SCITT and Teach@SJB.

2. Provider with no Ofsted grade omitted: North West and Lancashire Consortium.

3. University of Nottingham has absorbed Outstanding Primary Schools SCITT.

4. Bradford College appears twice because it was in transition and was both an HEI and a SCITT.

**Table A3: Postgraduate Secondary Teacher Trainers**

Provider	Trainees		Ofsted Grade	Entry Score	QTS Score	Overall Score
	First Year	Final Year				
University of Cambridge	200	202	1	764.8	593.8	679.3
The King Edward's Consortium, Birmingham	28	28	1	737.2	619.0	678.1
The Pimlico-London SCITT	9	9	1	713.6	619.0	666.3
Cramlington Teaching School Alliance SCITT	5	5	1	699.4	619.0	659.2
Redcar and Cleveland Teacher Training Partnership	14	14	1	670.1	619.0	644.5
Harris ITT	22	22	1	699.4	543.5	621.4
Loughborough University	46	53	1	604.3	619.0	611.7
University of Northumbria at Newcastle	31	31	1	648.5	565.3	606.9
North East Partnership SCITT (Physical Education)	30	30	1	635.7	563.6	599.7
Gloucester Initial Teacher Education Partnership	71	72	1	607.9	572.0	590.0
Alban Federation	29	30	1	555.7	619.0	587.4
University of Exeter	263	271	1	614.9	556.9	585.9
ARK Teacher Training	38	38	1	595.6	575.4	585.5
University of Oxford	172	174	1	625.8	531.8	578.8
University of Bristol	192	195	1	614.3	541.8	578.1
University of Nottingham	231	235	1	579.1	533.4	556.3
Carmel Teacher Training Partnership (CTTP)	71	71	1	534.7	572.0	553.4
University of Birmingham	237	261	1	561.0	541.8	551.4
University of Chichester	108	114	1	568.0	530.1	549.1
Cornwall SCITT	52	52	1	572.1	521.7	546.9
Royal Academy of Dance	24	24	1	678.2	409.3	543.7
Devon Secondary Teacher Training Group (DSTTG)	31	30	1	635.7	451.2	543.5
The OAKS (Ormiston and Keele SCITT)	55	55	1	559.8	526.7	543.2
Teach@SJB	13	13	1	466.0	619.0	542.5
University of Durham	118	125	1	583.3	484.8	534.1
Shotton Hall SCITT	36	36	1	542.6	525.0	533.8
Mid Somerset Consortium for Teacher Training	41	43	1	481.9	580.4	531.1
Bromley Schools Collegiate	54	54	1	559.8	494.8	527.3
Institute of Education, University of London	791	805	1	561.7	488.1	524.9
Wakefield Regional Partnership for ITT	27	27	1	485.7	556.9	521.3
University of Brighton, School of Education	173	185	1	547.7	474.7	511.2
University of Portsmouth	90	93	1	542.6	474.7	508.7
Buile Hill Visual Arts College SCITT	18	18	1	397.2	619.0	508.1
Stockton-on-Tees Teacher Training Partnership	15	15	1	481.0	506.6	493.8
Bath Spa University	150	155	1	491.7	489.8	490.7
King's College London	208	211	1	503.3	476.4	489.9
Compton SCITT	7	7	1	359.9	619.0	489.4
University of Warwick	216	239	1	508.0	457.9	483.0
Wildern Partnership	21	21	1	505.0	459.6	482.3
University of Manchester	200	210	1	558.5	402.6	480.5
Billericay Educational Consortium SCITT	20	20	1	337.6	619.0	478.3
Chiltern Training Group	36	36	1	383.4	572.0	477.7
The Hampshire LEARN SCITT Partnership	18	18	1	324.4	619.0	471.7
Staffordshire University	41	41	1	444.8	496.5	470.6
St Mary's University College	183	188	1	550.4	387.5	469.0
Kingsbridge EIP SCITT	46	47	1	421.2	476.4	448.8
University of Gloucestershire	24	25	1	430.5	417.7	424.1
Durham SCITT	40	40	1	395.3	451.2	423.3
Brunel University	49	51	1	470.9	323.8	397.3
York St John University	15	15	1	444.8	283.5	364.1
The Open University	5	152	1	487.2	211.4	349.3

Leeds Beckett University	16	16	2	651.7	619.0	635.3
George Spencer Academy SCITT	28	29	2	640.2	619.0	629.6
University of Winchester	13	17	2	670.1	520.0	595.1
Southend SCITT	25	25	2	625.1	551.9	588.5
Pennine Lancashire SCITT	13	13	2	670.1	489.8	580.0
University of Sussex	150	155	2	549.4	608.9	579.1
Norfolk Teacher Training Centre	19	19	2	516.3	619.0	567.6
Leicestershire Secondary SCITT	27	26	2	515.0	619.0	567.0
University of Leicester	113	114	2	609.4	516.7	563.0
Essex Teacher Training	66	66	2	552.6	568.7	560.6
Stourport SCITT	6	6	2	501.4	619.0	560.2
Leeds SCITT	34	35	2	497.2	619.0	558.1
Roehampton University	132	135	2	595.0	520.0	557.5
George Abbot SCITT	52	46	2	641.3	473.0	557.1
North Lincolnshire SCITT Partnership	8	7	2	492.5	619.0	555.7
Southfields Academy Teaching School SCITT	12	12	2	483.6	619.0	551.3
Wessex Schools Training Partnership	11	19	2	572.1	530.1	551.1
Manchester Metropolitan University	491	510	2	568.5	523.4	545.9
St Georges Academy Partnership	19	18	2	471.5	619.0	545.2
University of Chester	154	163	2	560.8	516.7	538.7
University of Hertfordshire	133	135	2	540.2	531.8	536.0
North Essex Teacher Training (NETT)	17	16	2	452.8	619.0	535.9
University of Worcester	173	181	2	523.7	545.2	534.4
South West Teacher Training	27	27	2	572.1	494.8	533.5
Oxford Brookes University	54	58	2	592.0	474.7	533.4
Bournemouth Poole and Dorset Secondary TP	31	31	2	501.4	565.3	533.4
University of Cumbria	301	311	2	516.1	548.5	532.3
University of Sheffield	81	85	2	572.1	481.4	526.8
Arthur Terry National Teaching School Alliance	19	19	2	607.5	442.8	525.2
University of Wolverhampton	116	122	2	511.8	536.8	524.3
The Basingstoke Alliance SCITT	19	19	2	426.9	619.0	523.0
The Pilgrim Partnership SCITT	30	30	2	480.2	563.6	521.9
Mid Essex ITT	23	23	2	489.1	546.8	518.0
University of Newcastle Upon Tyne	86	89	2	529.2	506.6	517.9
Tudor Grange SCITT	19	19	2	505.0	530.1	517.5
Kent and Medway Training	64	65	2	467.9	567.0	517.4
St Joseph's College Stoke Secondary Partnership	20	20	2	412.9	619.0	516.0
West Midlands Consortium	80	79	2	516.5	513.3	514.9
The Learning Institute South West	17	17	2	509.7	520.0	514.9
Suffolk & Norfolk GTP Provider	46	46	2	515.2	509.9	512.6
Ashton on Mersey School SCITT	48	48	2	439.5	583.7	511.6
The Grand Union Training Partnership	32	32	2	503.5	515.0	509.3
Colchester Teacher Training Consortium	44	42	2	478.3	538.5	508.4
The Beauchamp ITT Partnership	17	17	2	397.2	619.0	508.1
University of Derby	12	13	2	519.0	489.8	504.4
Suffolk and Norfolk Secondary SCITT	46	46	2	572.1	436.1	504.1
University of Leeds	110	111	2	591.4	407.6	499.5
The Havering Teacher Training Partnership	32	31	2	379.8	619.0	499.4
e-Qualitas	128	116	2	451.8	546.8	499.3
Birmingham City University	142	148	2	533.9	459.6	496.8
University of The West of England	151	151	2	540.0	452.9	496.5
Liverpool Hope University	153	161	2	497.8	493.2	495.5
Buckingham Partnership	31	31	2	423.5	565.3	494.4
University of Bedfordshire	66	69	2	538.6	449.6	494.1
The Bedfordshire Schools TP SCITT	50	50	2	399.8	585.4	492.6

Leeds Trinity University	113	117	2	479.3	489.8	484.6
University of Plymouth	52	54	2	535.4	432.8	484.1
London Metropolitan University	92	92	2	438.2	528.4	483.3
Ninestiles ITT Consortium and BPTP	26	27	2	408.9	556.9	482.9
Three Counties Alliance SCITT	27	27	2	408.9	556.9	482.9
University of East Anglia	146	148	2	434.8	528.4	481.6
Bradford College (SCITT)	27	28	2	342.9	619.0	480.9
University of Southampton	162	166	2	533.7	427.8	480.7
Bishop Grosseteste University	52	51	2	534.7	421.0	477.9
Liverpool John Moores University	114	119	2	519.5	436.1	477.8
Sheffield Hallam University	274	292	2	470.0	464.7	467.3
Educate Teacher Training	39	40	2	397.9	535.1	466.5
Thamesmead SCITT	13	13	2	441.6	489.8	465.7
University of Reading	175	177	2	501.8	419.4	460.6
Canterbury Christ Church University	331	394	2	471.9	447.9	459.9
CfBT Education Trust SCITT	54	54	2	424.4	494.8	459.6
Nottingham Trent University	141	145	2	489.1	422.7	455.9
Kirklees and Calderdale SCITT	34	33	2	442.0	466.3	454.2
University of East London	271	274	2	421.4	478.1	449.7
The Cambridge Teaching Schools Network TP	31	33	2	469.6	416.0	442.8
University of Hull	107	111	2	476.8	407.6	442.2
The Cambridge Partnership	59	63	2	341.6	538.5	440.0
Newman University	118	122	2	409.7	454.6	432.2
University of York	75	79	2	435.4	427.8	431.6
Doncaster ITT Partnership	29	29	2	411.0	446.2	428.6
Goldsmiths University	162	182	2	422.1	416.0	419.0
University of Sunderland	112	118	2	415.9	405.9	410.9
Isle of Wight SCITT	10	10	2	190.1	619.0	404.5
Edge Hill University	843	904	2	428.6	379.1	403.9
University of Huddersfield	46	46	2	466.0	327.1	396.5
Northampton Teacher Training Partnership	18	18	2	454.1	338.9	396.5
Kingston University	86	90	2	349.9	432.8	391.3
University of St Mark & St John	22	24	2	508.4	270.1	389.2
Bradford College (HEI)	49	49	2	310.2	447.9	379.1
Teaching London: LDBS SCITT	10	10	2	296.2	451.2	373.7
Oxon-Bucks SCITT	20	19	2	391.7	353.9	372.8
University of Greenwich	103	113	2	441.6	291.9	366.7
Middlesex University	116	117	2	350.8	375.8	363.3
Swindon Secondary Schools TAITE	9	9	2	280.3	432.8	356.5
The Kemnal Academies Trust (TKAT)	20	20	2	391.7	283.5	337.6
The Solent SCITT	17	17	2	505.9	125.8	315.8
Hibernia College UK Limited	40	65	2	491.9	129.2	310.5
Jewish Teacher Training Partnership	7	7	2	466.0	139.2	302.6
Titan Partnership Ltd	9	9	2	171.2	432.8	302.0
Teach East	9	9	3	501.4	619.0	560.2
Anglia Ruskin University	39	40	3	314.0	493.2	403.6
Kent County Council	21	22	4	404.7	543.5	474.1

1. Providers with fewer than five first-year trainees omitted: Keele University; Mersey, Manchester & Lancashire SCITT; North West Teaching School Alliance; University of Bath; University of Northampton; West Berkshire Training Partnership.
2. Provider with no Ofsted grade omitted: Matthew Moss Teacher Training Partnership.
3. University of Nottingham has absorbed Outstanding Primary Schools SCITT.
4. Bradford College appears twice because it was in transition and was both an HEI and a SCITT.

**Table A4: Undergraduate Teacher Training Providers in Rank Order, 2016**

Provider <sup>1</sup>	Trainees		Ofsted Grade <sup>1</sup>	Entry Score	QTS Score	Overall Score
	First Year	Final Year				
University of Durham	77	87	1	777.5	470.4	623.9
University of Winchester	219	303	1	624.6	583.8	604.2
University of Gloucestershire	119	90	1	541.3	597.5	569.4
University of Brighton, School of Education	294	343	1	551.4	526.4	538.9
University of Chester	124	175	1	483.7	478.6	481.1
University of Northumbria at Newcastle	108	119	1	477.4	467.7	472.5
University of Chichester	138	148	1	389.6	553.8	471.7
St Mary's University College	182	166	1	350.5	592.0	471.3
University of Derby	117	135	1.5	703.1	563.3	633.2
University of Greenwich	66	92	1.5	478.1	510.0	494.1
University of Reading	65	115	2	668.5	603.0	635.7
York St John University	181	140	2	595.6	624.8	610.2
University of Huddersfield	25	20	2	591.9	605.7	598.8
Nottingham Trent University	105	104	2	519.4	622.1	570.7
Bishop Grosseteste University	138	104	2	490.7	608.4	549.6
Canterbury Christ Church University	246	281	2	506.7	581.1	543.9
Edge Hill University	537	554	2	572.6	505.9	539.3
Oxford Brookes University	112	108	2	484.4	585.2	534.8
Liverpool John Moores University	56	94	2	539.8	529.2	534.5
Liverpool Hope University	182	159	2	447.2	613.9	530.6
Leeds Beckett University	116	260	2	478.8	542.8	510.8
University of St Mark & St John	89	130	2	459.9	557.9	508.9
University of Northampton	151	117	2	429.7	581.1	505.4
University of Hull	92	99	2	453.9	536.0	495.0
University of Hertfordshire	80	113	2	485.9	492.3	489.1
Birmingham City University	175	181	2	438.3	538.7	488.5
University of Worcester	128	128	2	525.3	418.5	471.9
University of The West of England	131	131	2	663.7	266.8	465.2
Sheffield Hallam University	218	240	2	416.7	480.0	448.4
Leeds Trinity University	142	271	2	446.1	447.2	446.6
University of Plymouth	177	315	2	433.1	456.8	444.9
London Metropolitan University	5	20	2	536.1	332.4	434.3
University of Wolverhampton	98	96	2	450.2	403.5	426.8
Newman University	103	121	2	464.7	369.3	417.0
Kingston University	57	83	2	298.8	426.7	362.8
University of Cumbria	272	556	2	405.6	302.3	354.0
Middlesex University	46	75	2	308.5	219.0	263.7
University of Sunderland	111	208	3	563.3	496.4	529.8
Manchester Metropolitan University	290	430	3	538.3	470.4	504.4
University of Bedfordshire	111	116	3	408.9	439.0	424.0

1. In two cases the primary and secondary provision had different Ofsted grades and they have been placed between the 'outstanding' and 'good' categories.